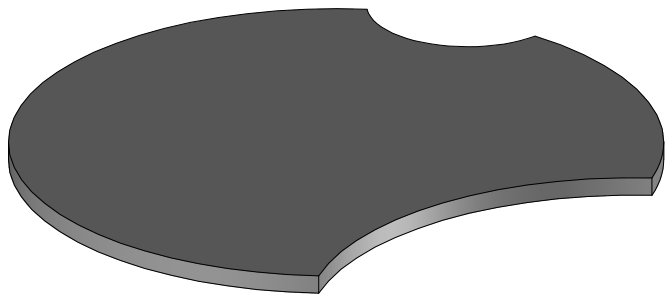
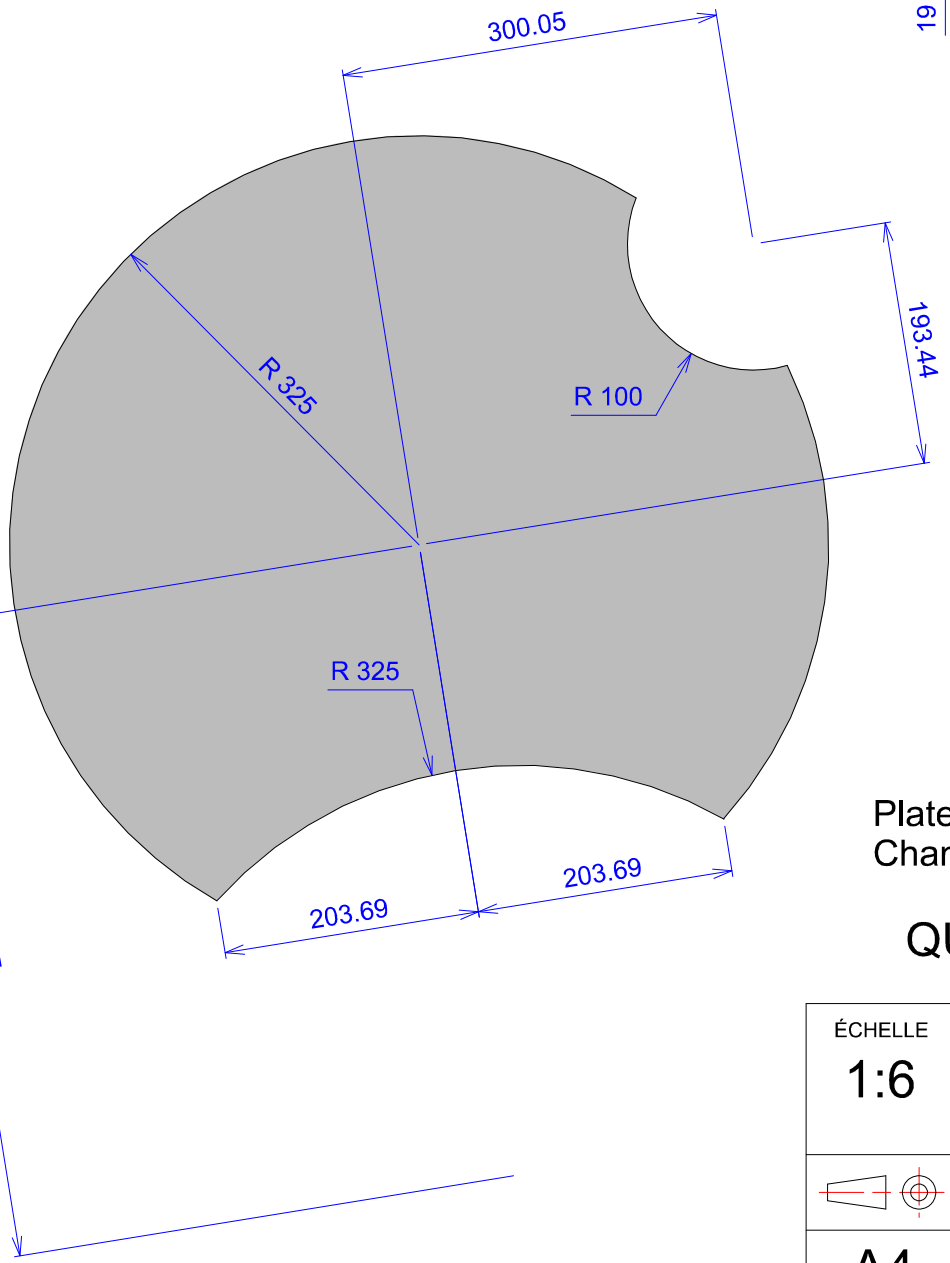
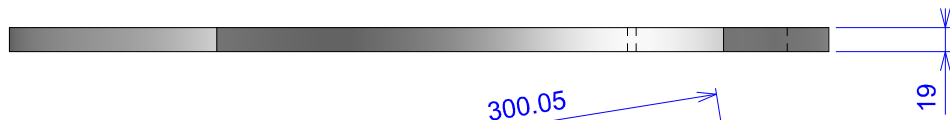


D C B A



Plateau en mélaminé 19mm Gris perle U763 ST2
 Chant pvc mince 23x1mm Gris 041.2580 sur toute la périphérie

QUANTITE = 20

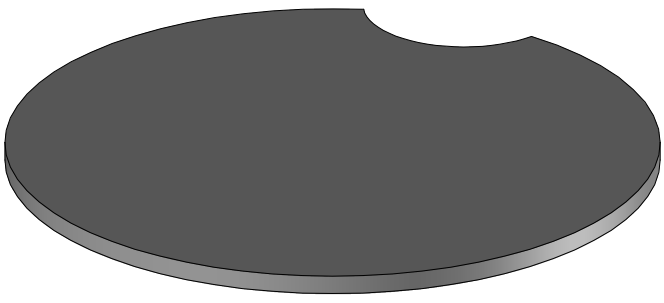
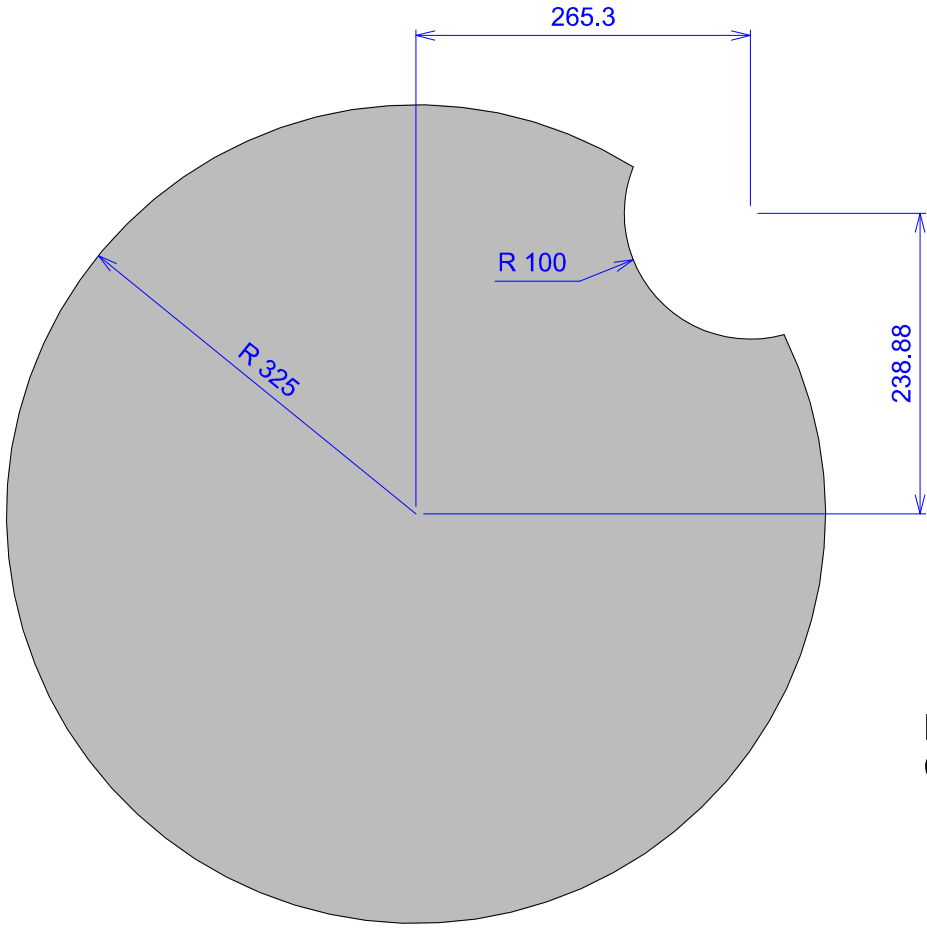
ÉCHELLE 1:6	Plateau inf	AUTEUR Etienne CORNUEL		
		DATE 09/07/2008		
	B.D.E. S.A.			
A4	H:\Missler\Projet\Projet Top2011\Sofame\2525\Plateau inf.dft			00

D C B A

4
3
2
1

4
3
2
1

D C B A



Plateau en mélaminé 19mm Gris perle U763 ST2
 Chant pvc mince 23x1mm Gris 041.2580 sur toute la périphérie

QUANTITE = 20

ÉCHELLE 1:6	Plateau sup	AUTEUR Etienne CORNUEL		
		DATE 09/07/2008		
	B.D.E. S.A.			
A4	H:\Missler\Projet\Projet Top2011\Sofame\2525\Plateau sup.dft			00

D C B A

4
3
2
1

4
3
2
1